

Photonic Sprinter
MediaRouterX



Long-Distance Connection between Stadium and Studio

Optical packet transponder supporting 400G ZR/ZR+ and L2/L3 function are integrated. It enables long-haul, high-speed, and large-capacity transmission. Moreover, the box has an integrated PTP Grandmaster function for broadcast equipment for IP transmission.

Key Features

■ High Space Efficiency

One box offers optical packet transponder, L2/L3 routing function, and TC (Transparent Clock) and BC (Boundary Clock) functions for PTP-supported switch. With GNSS receiver, it also offers PTP Grandmaster Clock function.

■ Large Capacity and Long-Haul Optical Communication

High performance QSFP-DD optical communication module (400G ZR/ZR+) with optical digital coherent technology realizes long-haul transmission of high-speed and large-capacity data, including uncompressed video.

■ L2/L3 Routing

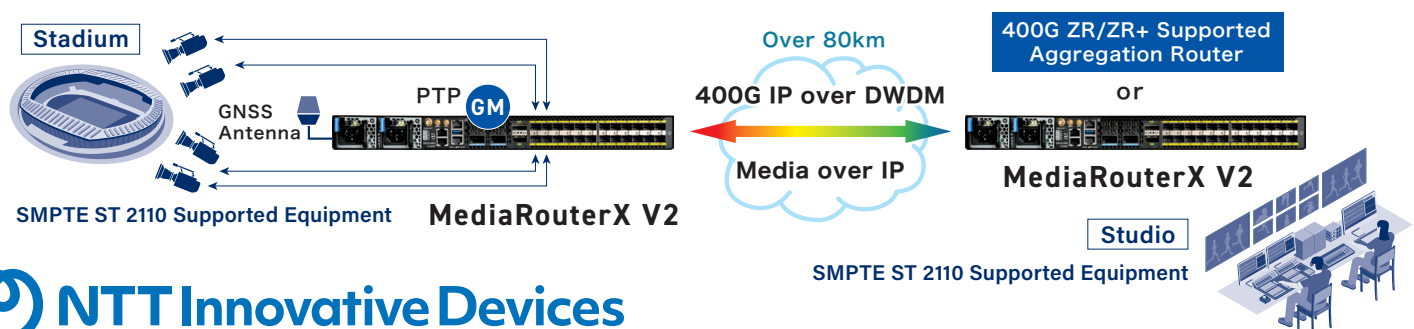
The box has a white box cell site router using the Broadcom Qumram2a chipset. With commercial network OS, it offers L2/L3 routing function. By adopting standardized technologies such as OIF, Open ZR+, and MSA, it achieves an economical 400G IP over DWDM with the integration of IP layer and optical layer.

■ Other Functionality

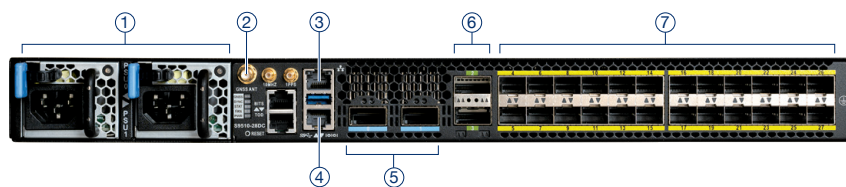
PTP function will support IEEE1588v2 and SMPTE ST 2059-2 profile.

Application

Example: Remote Production Connecting Stadium and Production Studio



Front Panel



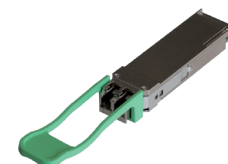
Rear Panel



- ① PSU 1+1
- ② GNSS antenna input
- ③ management port
- ④ console port
- ⑤ QSFP-DD x 2
- ⑥ QSFP28 x 2
- ⑦ SFP28 x 24
- ⑧ FAN module x 4+1



⑨ 400G-ZR/ZR+



⑩ Pluggable EDFA

Specifications

■ Chassis (White Box Packet Transponder)

Management Interface	QSFP-DD 100G/400GbE (23W)× 2ports, QSFP28 40G/100GbE (5W)× 2ports SFP28 10G/25GbE (2W)× 24ports, other (GNSS antenna IN × 1)
Management Interface	Management port: 10/100/1000BASE-T (RJ-45)× 1, console port (RJ-45)× 1
Dimensions	1RU W:440 × D:302 × H:44 (mm) or less (w/o Connector, Foot, Rack mount bracket)
Weight	11kg typ.
Supply Voltage	AC100 ~ 240VAC, 50/60Hz (Hot-swappable dual power supply)
Power Consumption	400W max.
Operating Environment	0 ~ 40°C , 30 ~ 80% (non-condensing)
Compliance	RoHS, VCCI, CE, FCC, BSMI, CB, LVD, UL/cUL

■ Network OS

Model	MediaRouterX D2	MediaRouterX V2
L2 Function	YES (VLAN, STP, etc.)	YES (VLAN, STP, IGMP snooping, ERPS, etc.)
L3 Function	- (Not supported)	YES (ARP, BGP, OSPF, etc.)
PTP Function	- (Not supported)	YES (IEEE 1588-2008 AnnexJ, SMPTE ST 2059-2)

■ DWDM option

● Pluggable Coherent Module (QSFP56-DD)

Type	400G ZR (OIF 400ZR)	400G ZR+ (OpenZR+ + MSA)	
Operation Mode	400ZR	OpenZR+	400ZR
Bps	400G	100/200/300/400G	400G
FEC	C-FEC	O-FEC	C-FEC

● Pluggable EDFA (QSFP28)

Type	Booster Amplifier	Preamplifier
Input Range	-20 ~ 0dBm	-30 ~ -10dBm
Gain	9 ~ 24dB (Nominal 17dB)	9 ~ 24dB (Nominal 17dB)
Saturated Light Output Power	17dbm	7dbm

□ Our company may change specifications and the appearance for improvement that are incidental to the product without providing prior notice.

At the purchase and the use of the product, please confirm the latest information.

□ Exporting our products or technologies may be subject to the Foreign Exchange and Foreign Trade Law of Japan and export control acts and regulations of other related countries.

□ All brand or product names are trademarks or registered trademarks of their respective companies or organizations.



NTT Innovative Devices Corporation

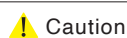
Sales Department 2, International Sales Division

Aquaria Tower Yokohama, 1-1-32 Shin-urashimacho, Kanagawa-ku,

Yokohama-shi, Kanagawa, 221-0031, Japan

E-mail: sys-info-w-ml@ntt-el.com

URL: <https://www.ntt-innovative-devices.com/en/>



Caution

Please use our products in accordance with the instructions provided in the manual, user's guide or specifications attached.